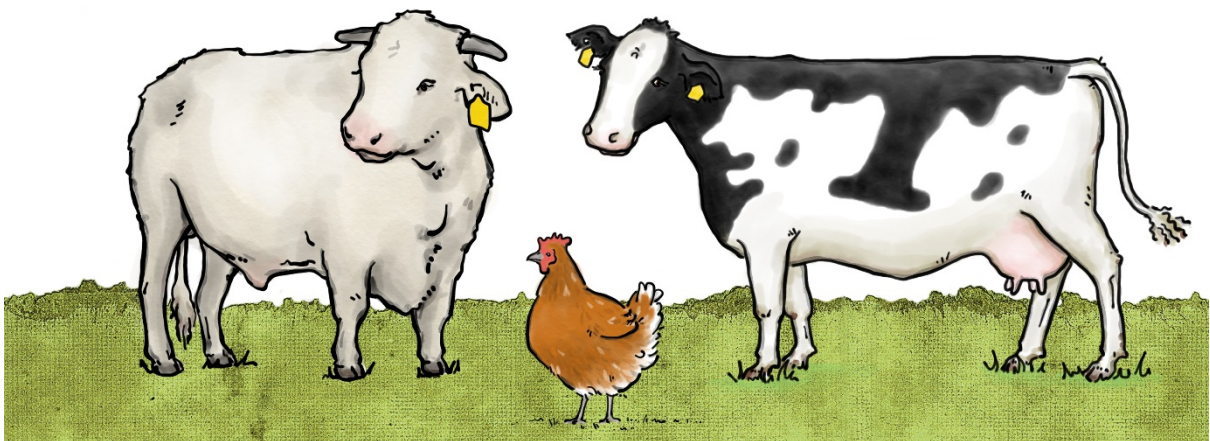


Exploring the Tocal Virtual Farm

in Stage 2 / year 3 & 4

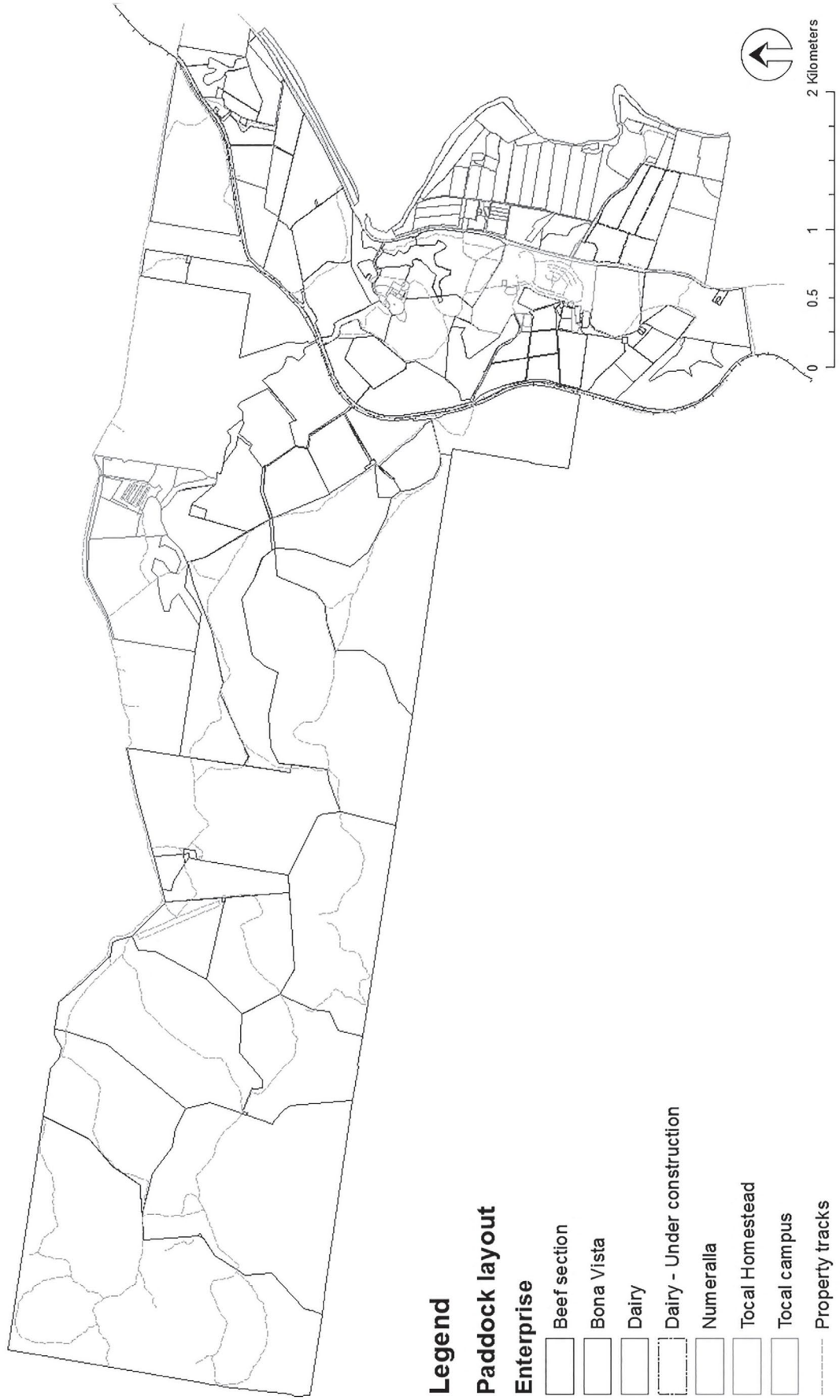


Name:

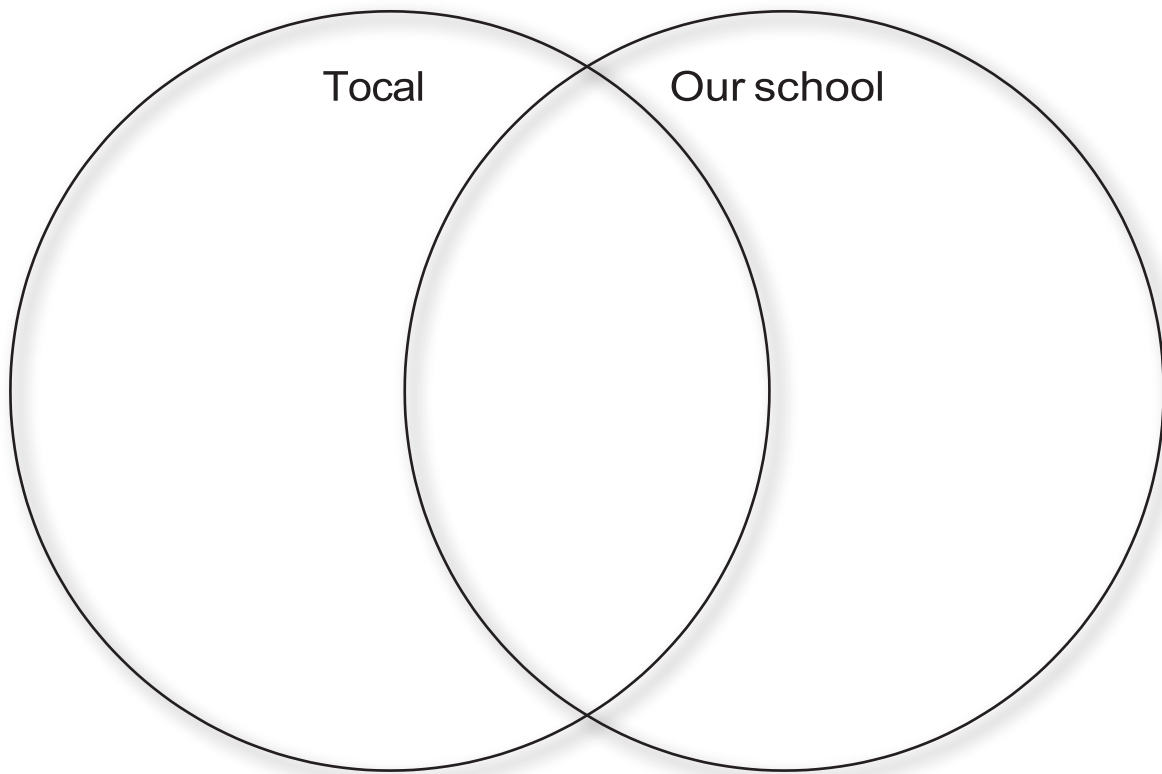
What is a farm?

Features of Tocal

Total Property and Farms



The difference between our school and Tocal...



.....

.....

.....

.....

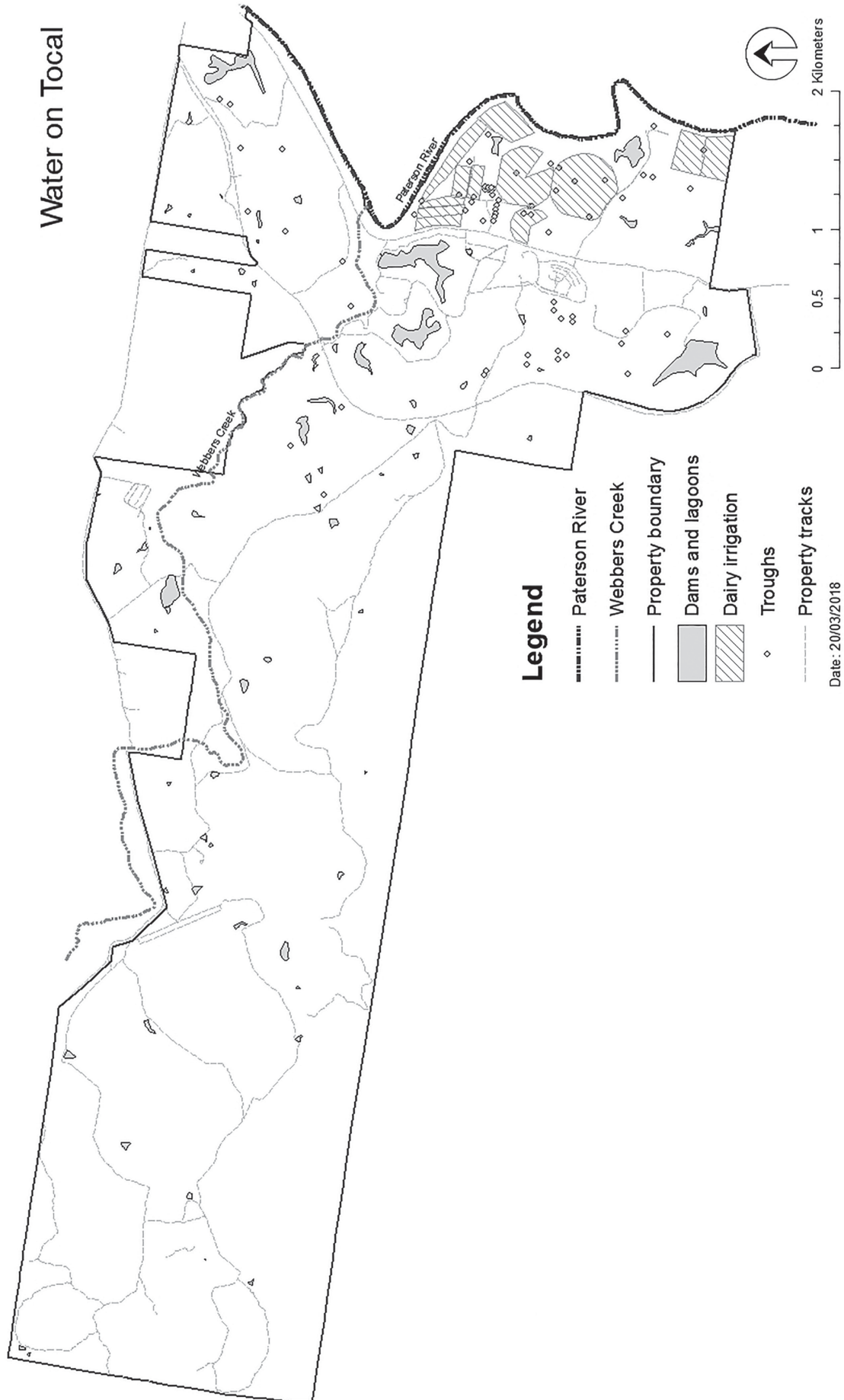
.....

.....

.....

Water and weather on Tocal

Label or colour code the water sources as natural, managed or constructed.



How do farm managers make sure animals have good access to water?

.....

.....

.....

.....

How is this different to the way people provide water for their pets?

.....

.....

.....

.....

What naturally occurring events could affect the way farmers are able to provide water?

.....

.....

.....

.....

What do the sections on Tocal produce?

Chickens

.....

.....

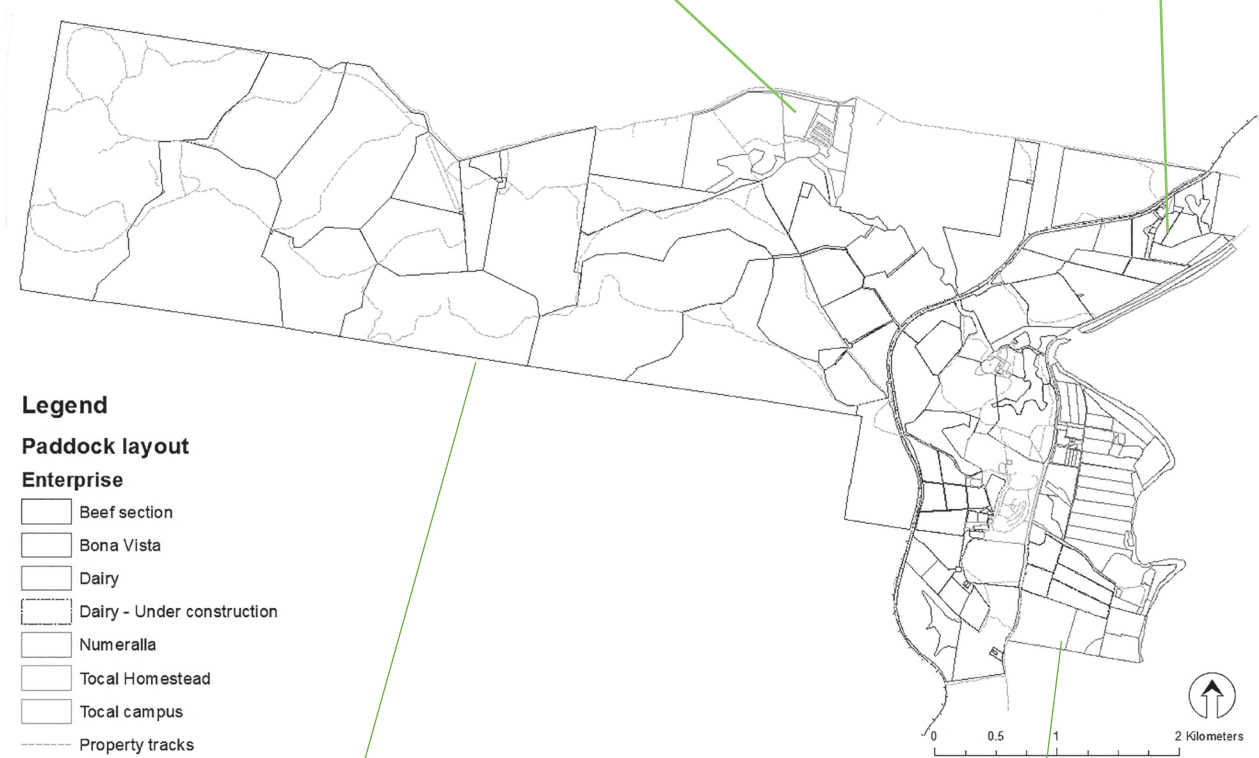
.....

Sheep

.....

.....

.....



Beef

.....

.....

.....

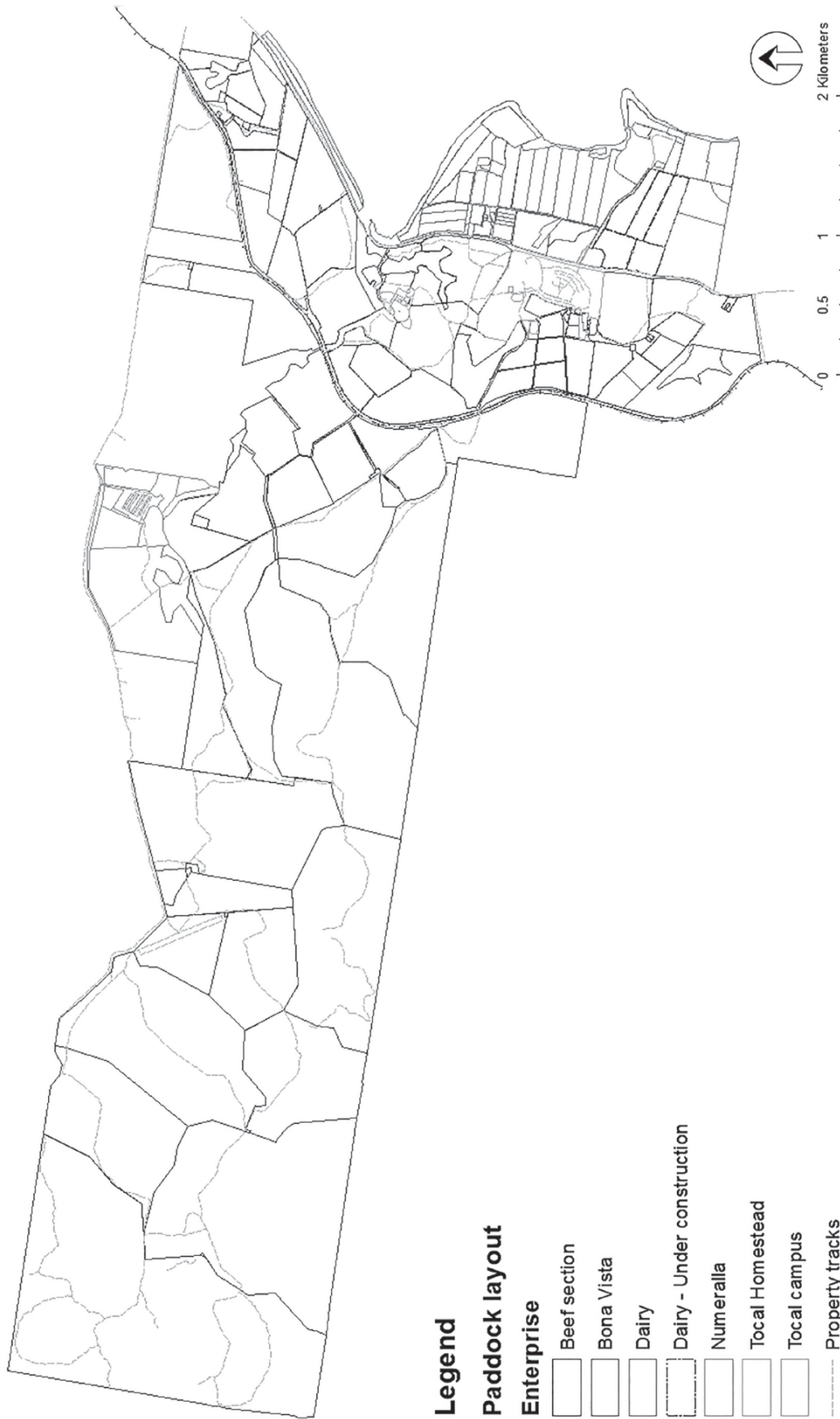
Dairy

.....

.....

.....

Is Tocal a natural, managed or constructed landscape?



Date: 20/02/2018

Tocal sections

Section/Area	Natural, managed or constructed?	Features we saw on the Tocal Virtual Farm	How is it cared for?
Homestead			
Dairy			
Beef section			
Numeralla			
College campus			

Know your product

Research template

Food/product being researched:

.....

Ingredients:

.....

.....

.....

.....

.....

How is it (or the ingredients) produced or grown?

.....

.....

.....

.....

Growing season:

.....

What processing does it undergo before it gets to us?

.....

.....

.....

.....

.....

Do we eat it raw or cooked?.....

.....

Production diagram

Record the process of producing the food that you have researched here.



Changes over time at Tocal

Create a timeline of the changes in agriculture shown in the buildings and other evidence on Tocal. Hint: start with the grinding grooves.

The people of Tocal

What is the name of the Aboriginal people who were on Tocal long before these people?

..... H

How did their activities change the landscape or the local area?

.....

.....



JAMES WEBBER

When was he at Tocal?

.....

.....

What was his job?

.....

.....

What did he do differently to those before him?

.....

.....

How did his time at Tocal change the landscape or the local area?

.....

.....

.....

What had changed from the people before him or what did the next people change?

.....

.....



PERCY REYNOLDS

When was his family at Tocal?.....

.....

What was agriculture like when they were there?.....

.....

.....

What did they do differently to those before them?

.....

.....

How did their time at Tocal change the landscape or the local area?

.....

.....

.....

What had changed from the people before him or what did the next people change?

.....

.....



CB ALEXANDER

When was he at Tocal?

.....

.....

What was his job?

.....

.....

What did he do differently to those before him?

.....

.....

How did his time at Tocal change the landscape or the local area?

.....

.....

.....

What had changed from the people before him or what did the next people change?

.....

.....



MYRTLE AND
RITA CURTIS

When were they at Tocal?

.....

.....

How did Tocal change while they were there?

.....

.....

.....

.....

.....

Did their time on Tocal have a lasting effect on the site or agriculture?

.....

.....

.....

What had changed from the people before him or what did the next people change?

.....

.....



STUDENTS AND
COLLEGE STAFF

How long have students and teaching staff been at Tocal?

.....
.....

What do they do there?

.....
.....
.....
.....
.....
.....

Review / Notes