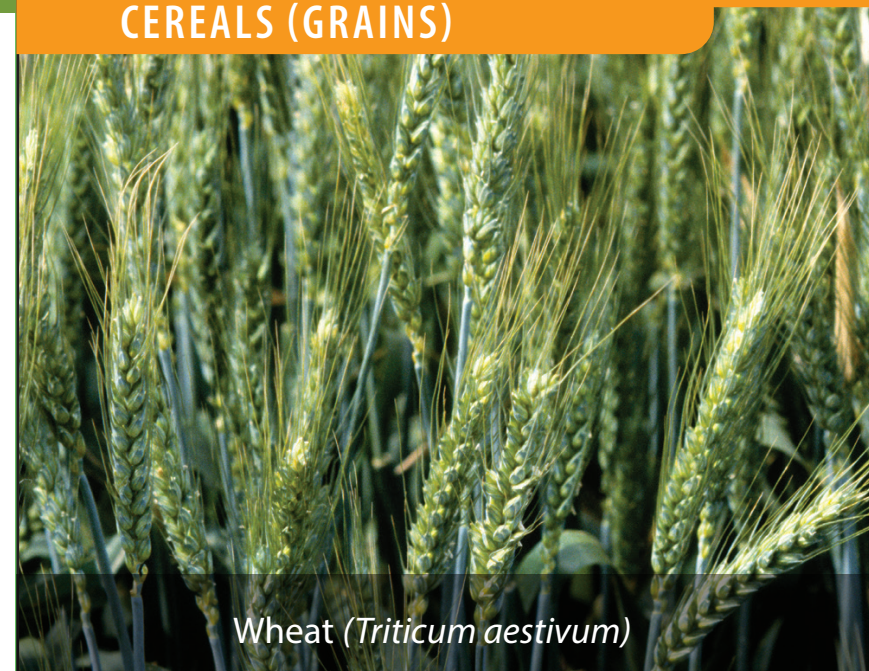
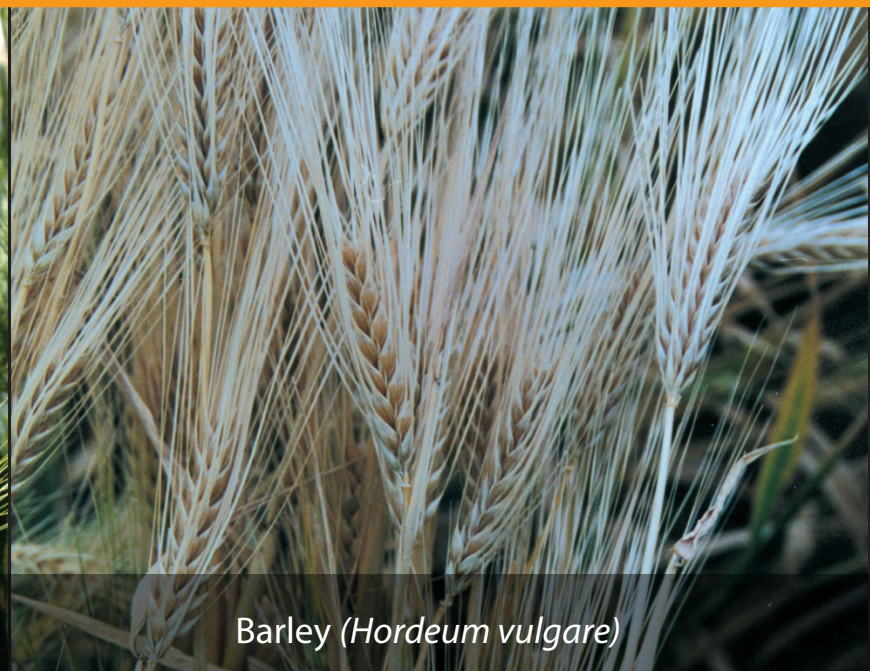


# Agricultural crops of New South Wales

## CEREALS (GRAINS)



Wheat (*Triticum aestivum*)



Barley (*Hordeum vulgare*)



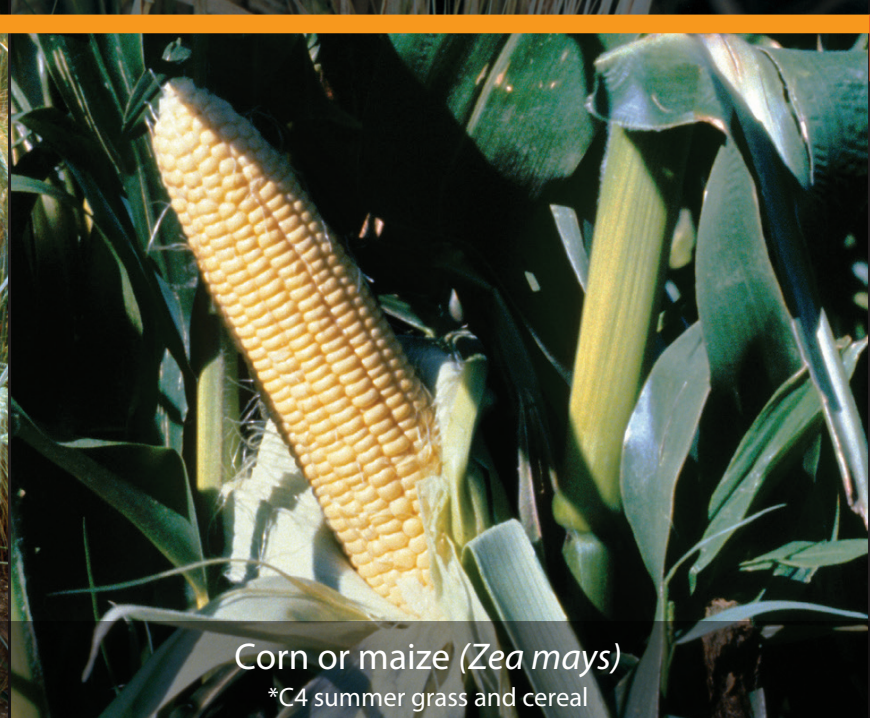
Oats (*Avena sativa*)



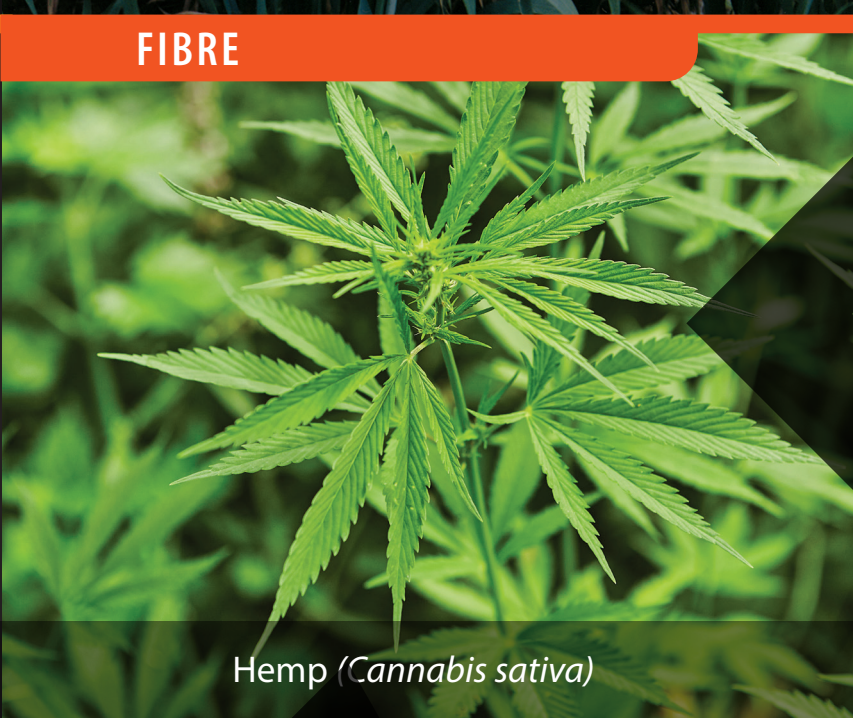
Cereal rye (*Secale cereale*)



Triticale x. (*Triticosecale* spp.)



Corn or maize (*Zea mays*)  
\*C4 summer grass and cereal

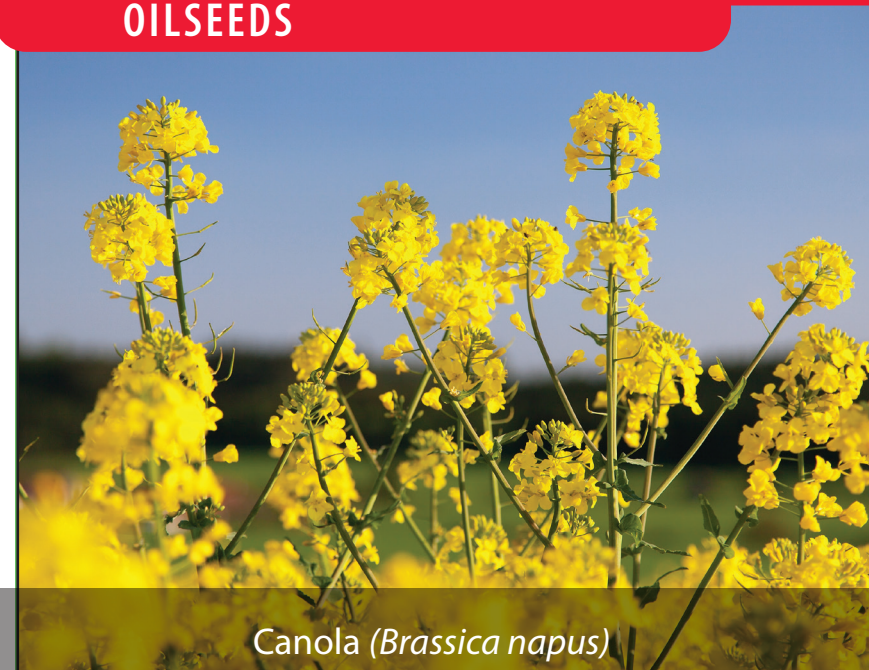


Hemp (*Cannabis sativa*)



Cotton (*Gossypium hirsutum*) \*oilseed and fibre

## OILSEEDS



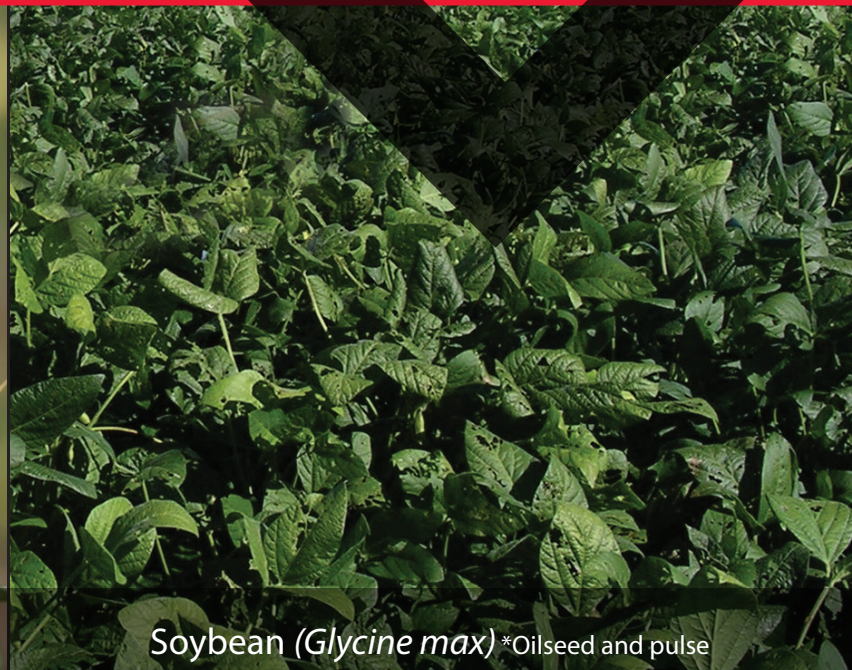
Canola (*Brassica napus*)



Sunflower (*Helianthus annuus*)

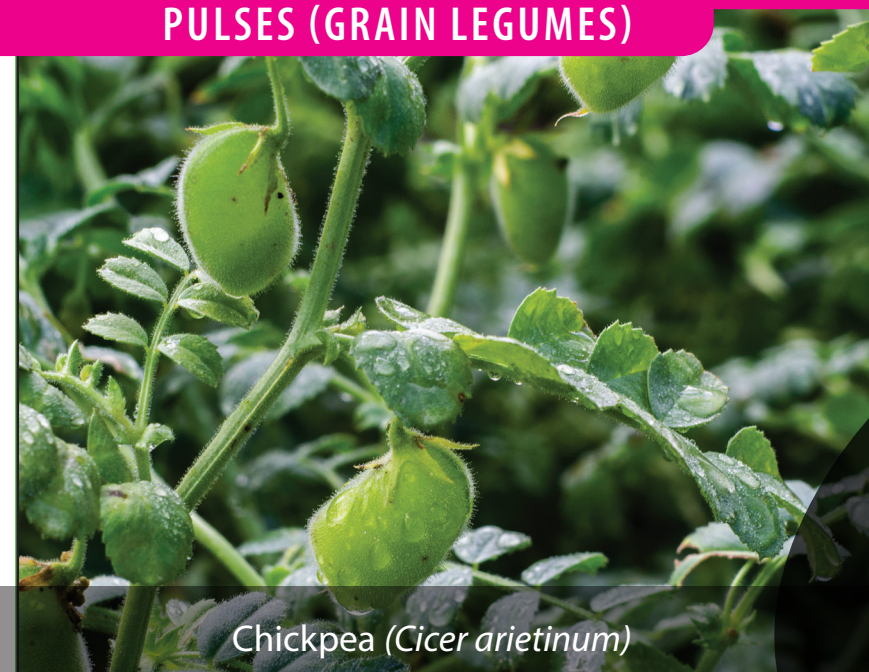


Safflower (*Carthamus tinctorius* L.)

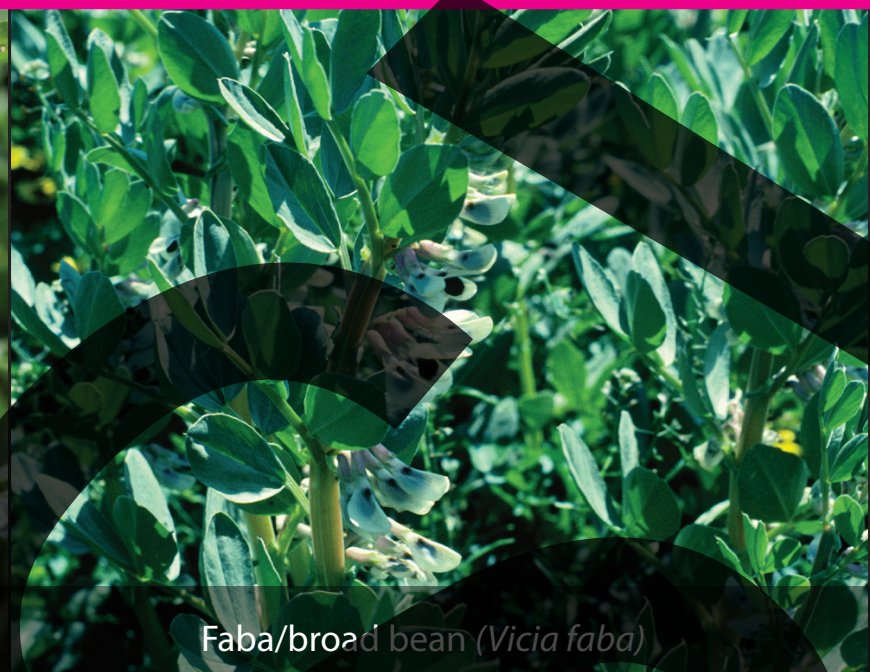


Soybean (*Glycine max*) \*oilseed and pulse

## PULSES (GRAIN LEGUMES)



Chickpea (*Cicer ariletinum*)



Faba/broad bean (*Vicia faba*)



Field pea (*Pisum sativum*)



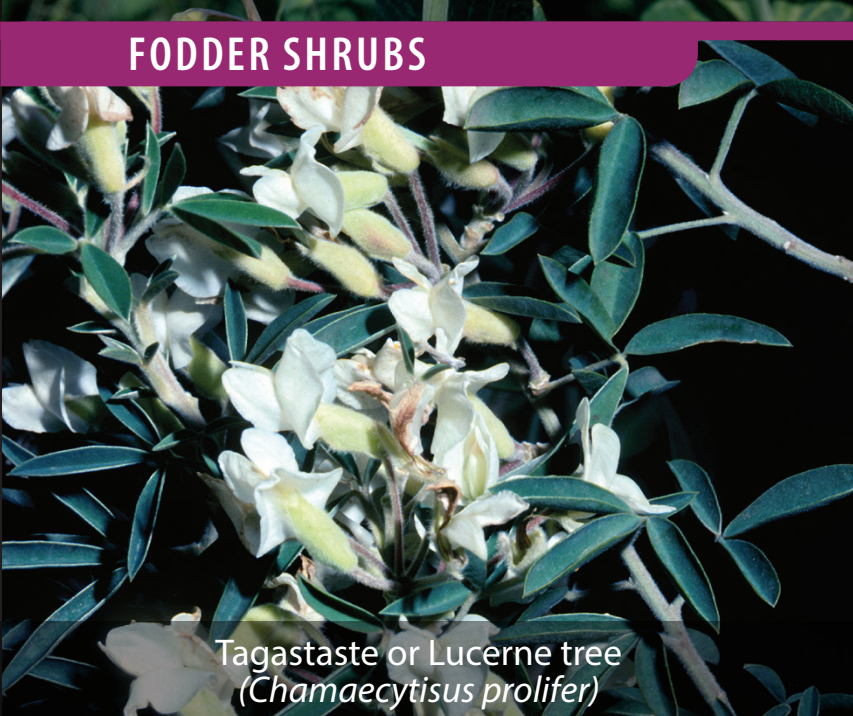
Lentil (*Lens culinaris*)



Lupin, narrowleaf (*Lupinus* spp.)



Mungbean (*Vigna radiata*)



Tagastate or Lucerne tree  
(*Chamaecytisus prolifer*)



Saltbush (*Atriplex* spp.)

## FORAGE GRASSES



Leucaena (*Leucaena leucocephala*)



Sugarcane (*Poaceae Saccharum*)  
\*C4 grass and sugar



Millet, Japanese (*Echinochloa esculenta*)

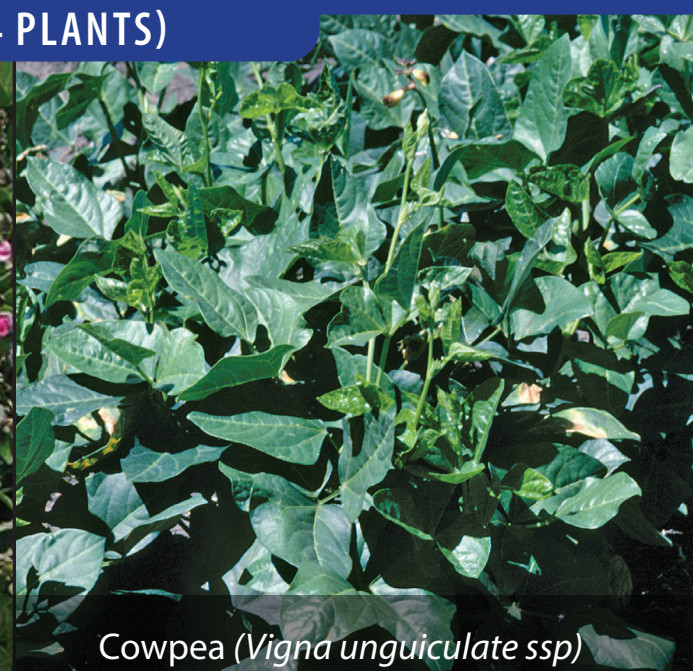


Forage sorghum (*Sorghum bicolor*)

## SUMMER FORAGE LEGUMES (C4 PLANTS)



Lablab (*Lablab purpureus*)



Cowpea (*Vigna unguiculata* ssp.)



Forage rape (*Brassica napus* ssp rapifera)



Turnip (*Brassica rapa*)



Kale (*Brassica oleracea*)

## FORAGE BRASSICAS

Distribution of  
agricultural crops and  
pastures around NSW is  
governed by factors:



climate



soils



topography



insect pests



plant diseases



weeds



economic  
conditions

Crops and pastures  
are used to:

- Produce grain, oil, fibre or fodder
- Grazed by livestock
- Fill a feed gap for grazing livestock, for example, winter crops can provide valuable feed when pasture growth is limited.
- Provide groundcover to prevent soil erosion.
- Improve soil structure.
- Increase biodiversity and soil microbial activity.
- Increase soil nutrient levels
- Provide a pest/disease/weed break in a cropping rotation.
- Increase productivity of saline and waterlogged land.



Plant based  
systems are the  
foundation of  
all agricultural  
production