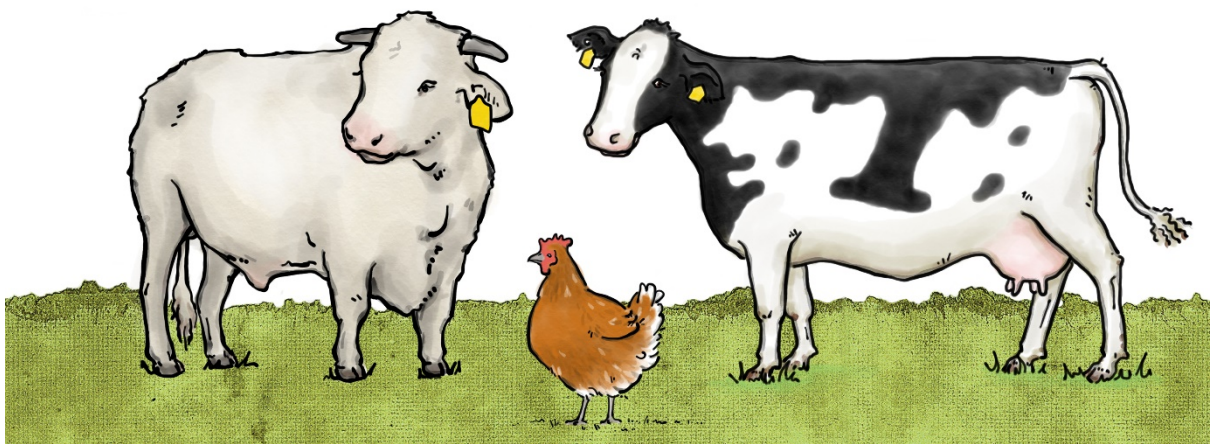


# Exploring the Tocal Virtual Farm

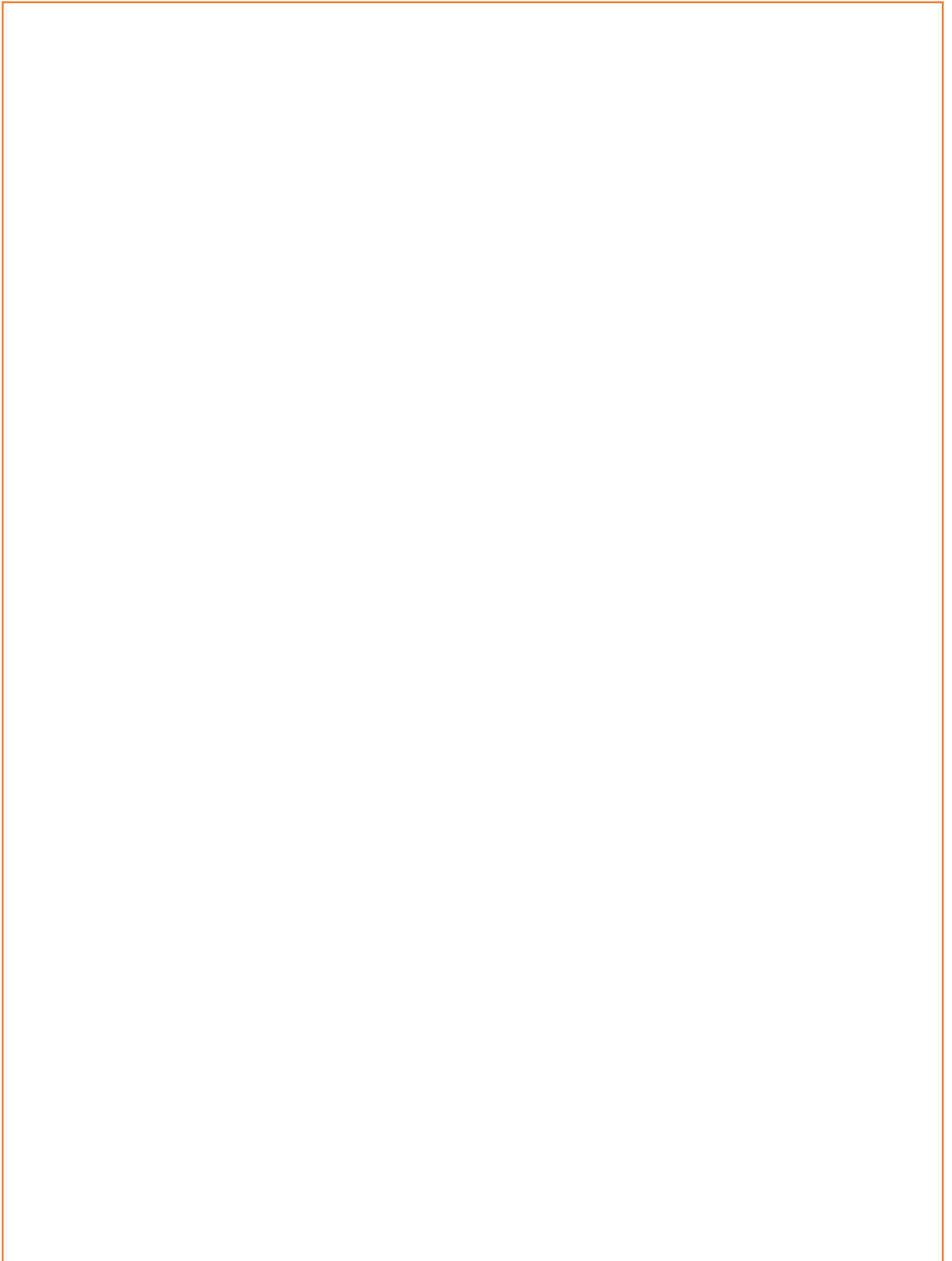
in Stage 1 / years 1 & 2



Name:

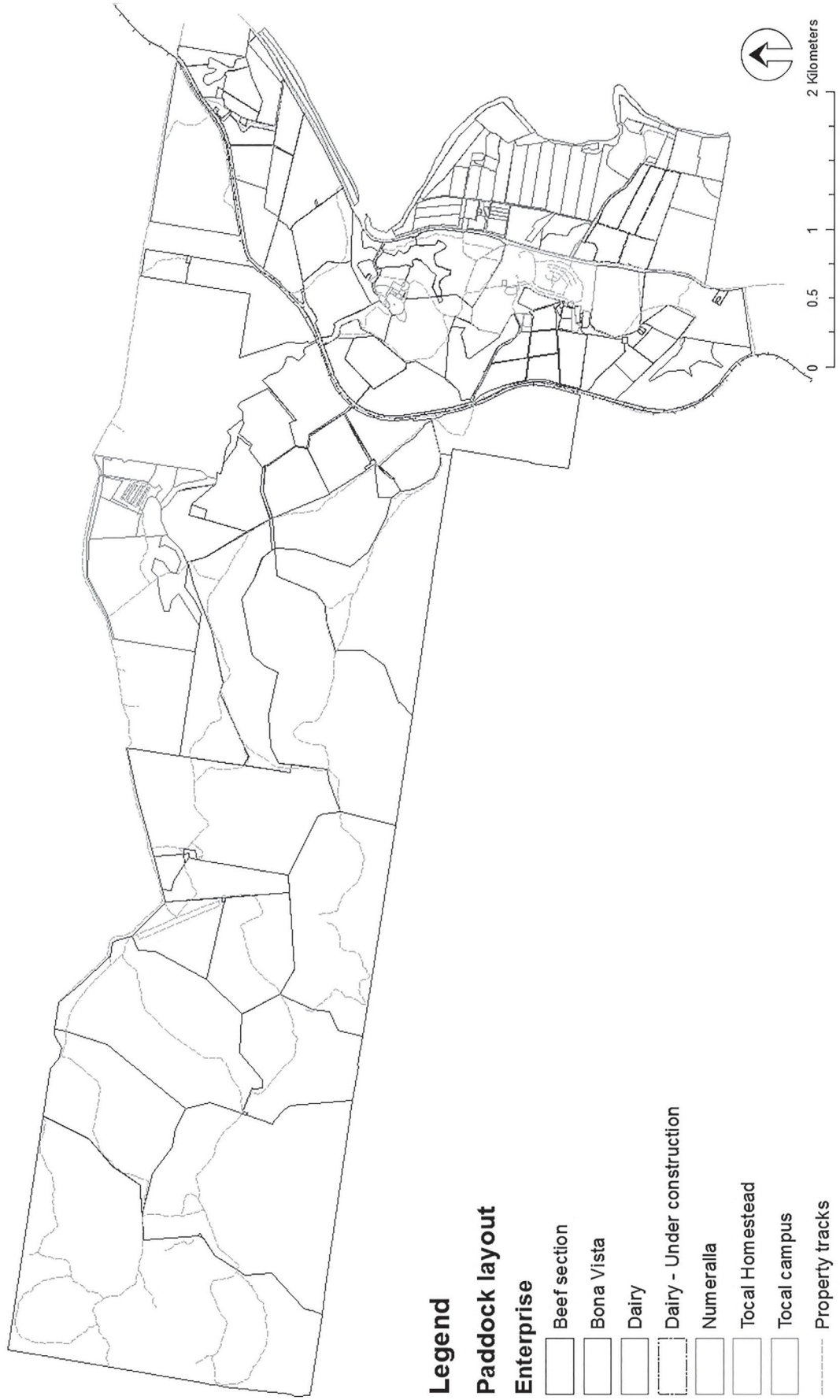
---

Name of my farm:

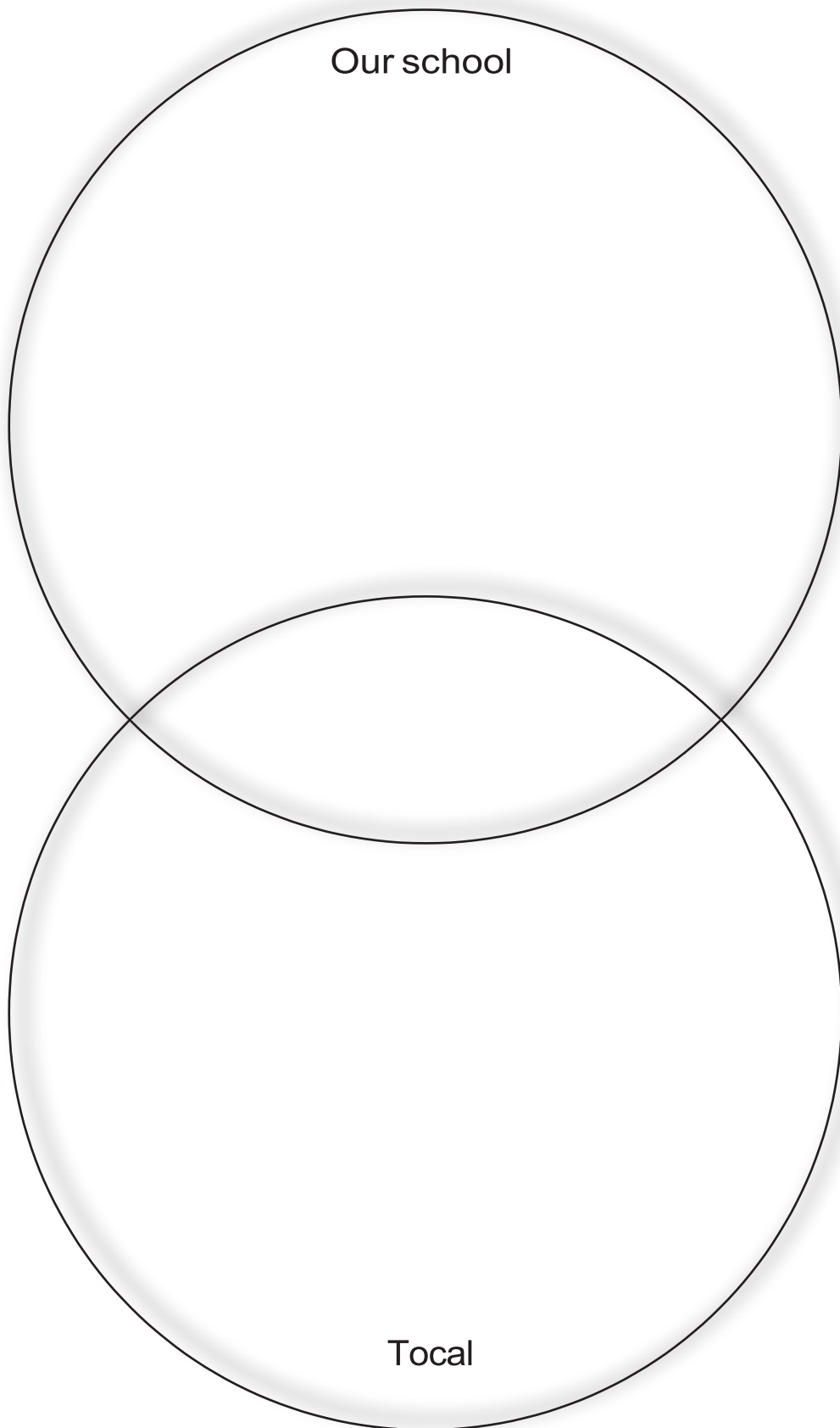
A large, empty rectangular box with a thin orange border, intended for the user to write the name of their farm.

# Features of Tocal

## Total Property and Farms

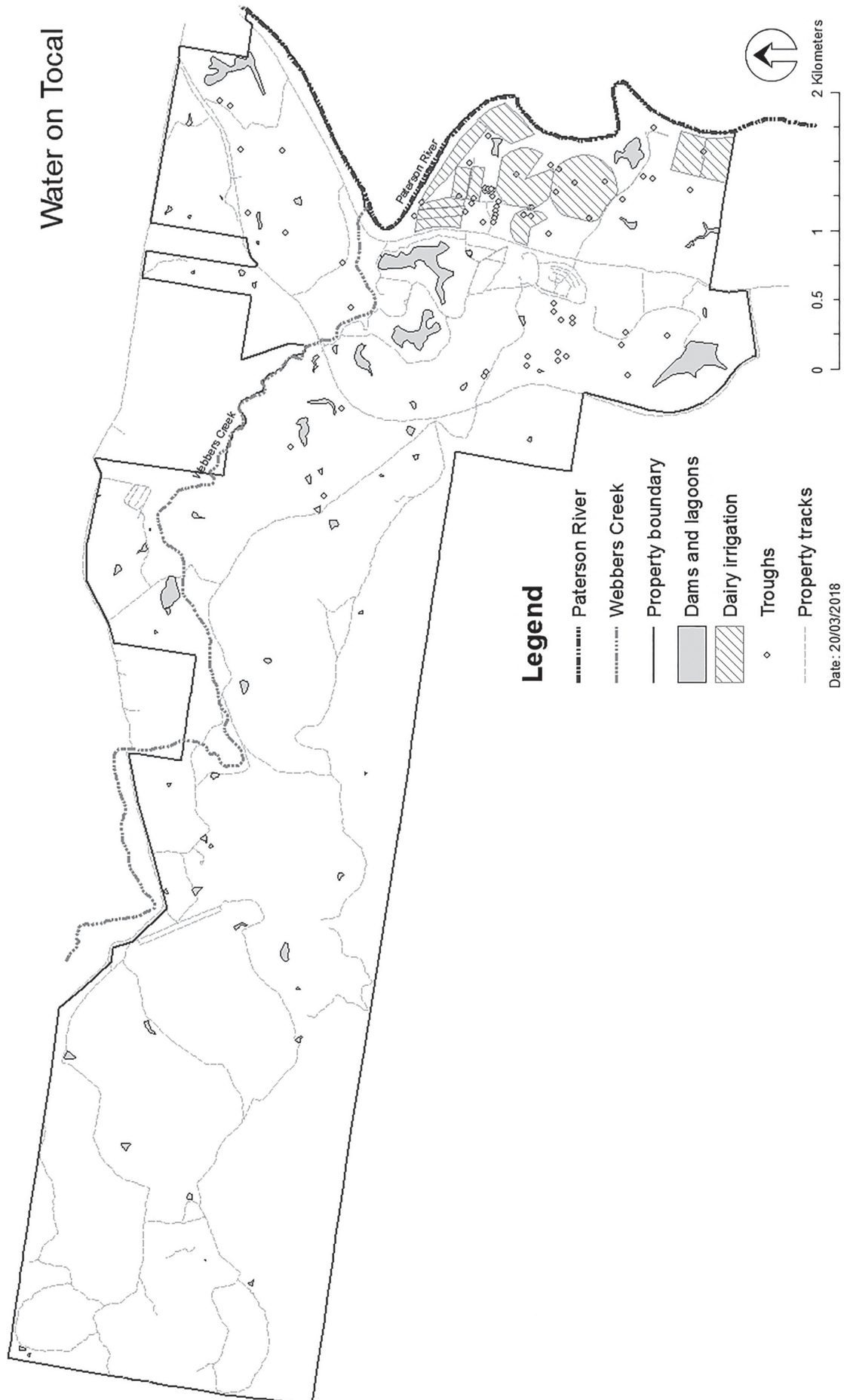


The difference between our school and Tocal...



# Water and weather on Tocal

Label or colour code the water sources as natural, managed or constructed.



Where do you get water from when you would like a drink?

.....

.....

Where do pets get water from when they need a drink? Think of some different pets that you have or have heard about.

.....

.....

.....

.....

.....

How do farmers make sure farm animals have enough water?

.....

.....

.....

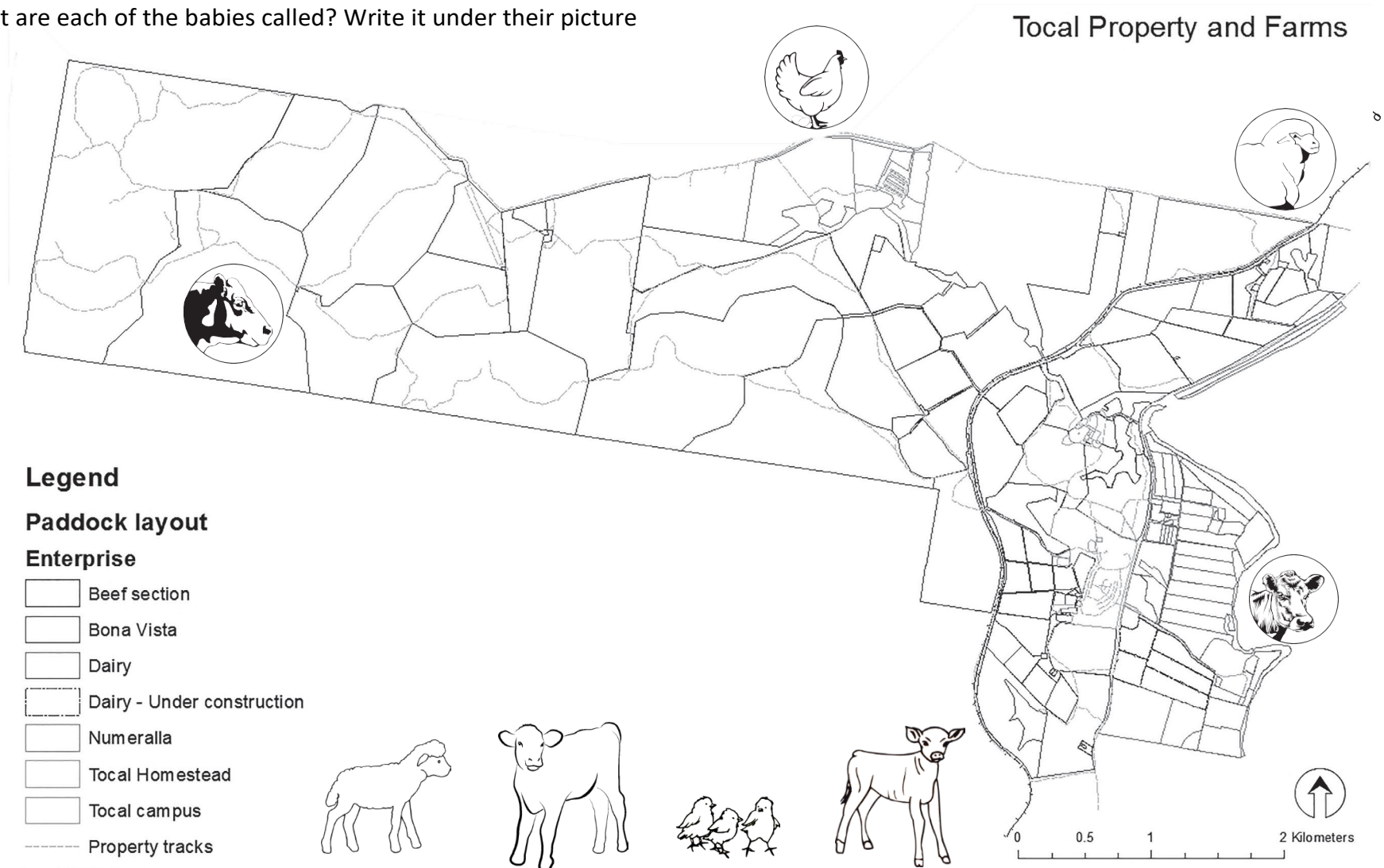
.....

.....

## What do the farms on Tocal produce?

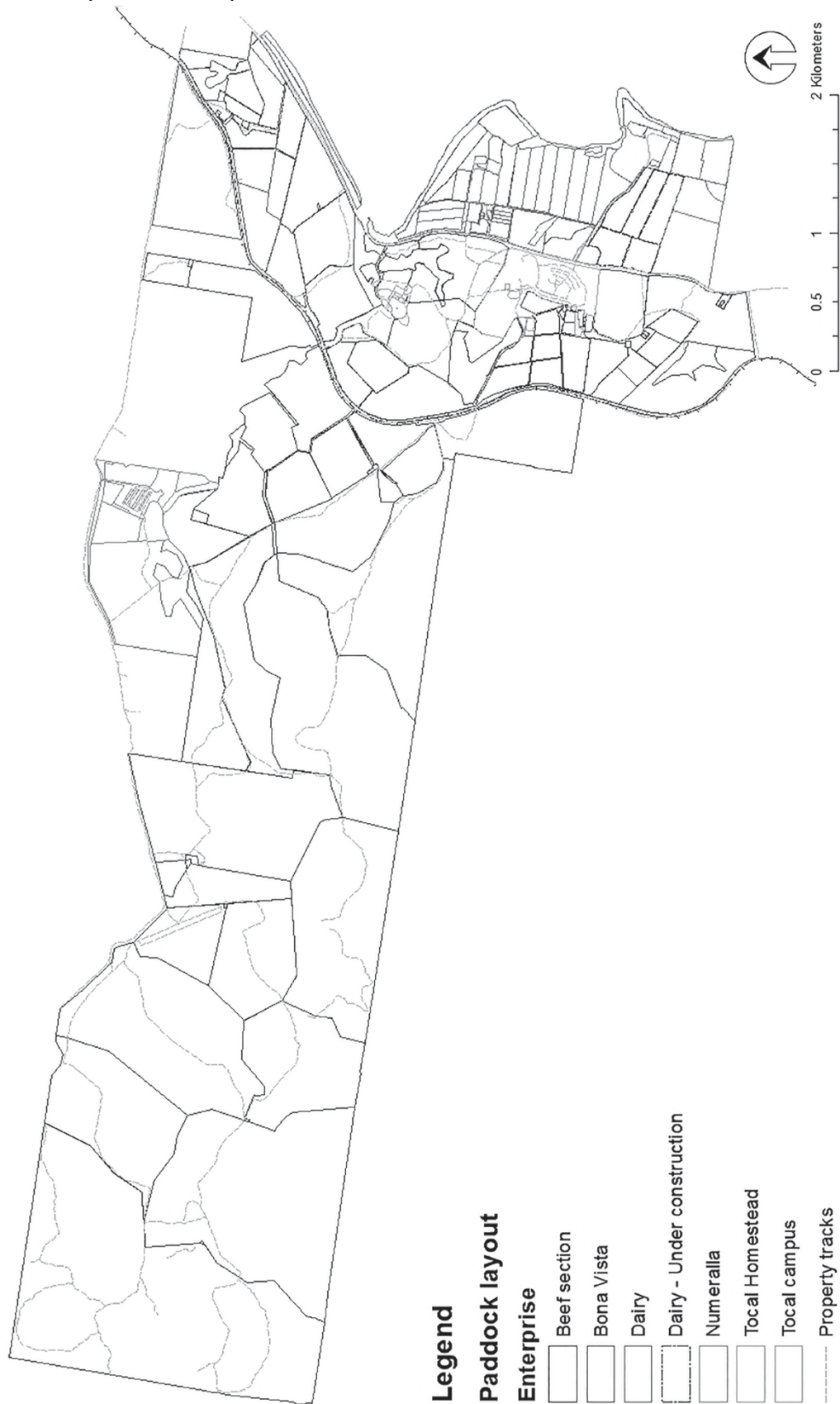
Last night some gates were left open and the animals are a bit mixed up. Help our farm managers sort out which animal belongs in which part of the property.

What are each of the babies called? Write it under their picture



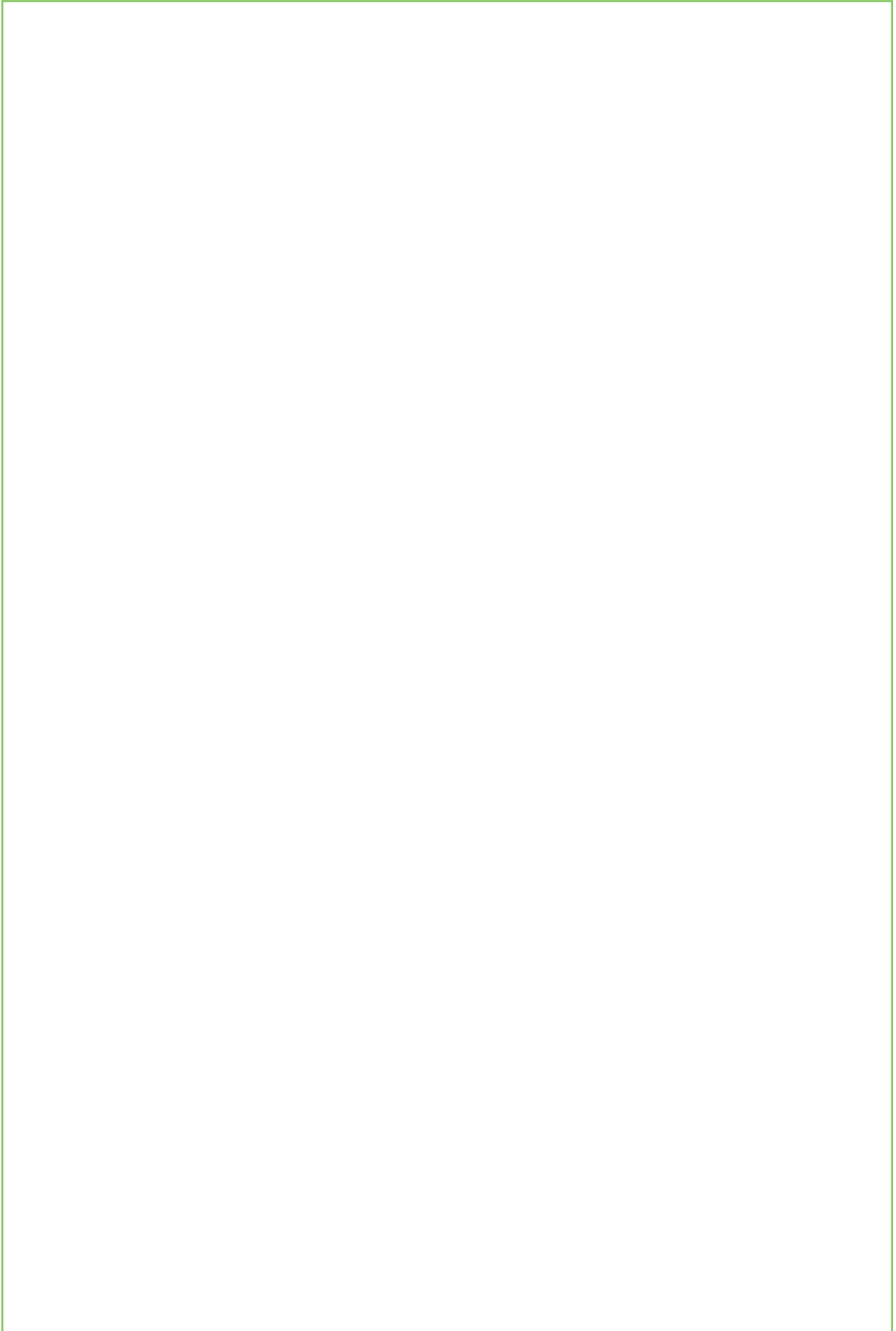
## Is Tocal a natural, managed or constructed landscape?

Colour code the natural, managed and constructed landscapes on Tocal and record some of the features you would expect to see there.





## Know your product



## Changes over time at Tocal

*Older*

*Newer*

## The people of Tocal

What is the name of the Aboriginal people who were on Tocal long before these people?

.....

Where did they find food? .....

.....

.....

Write a little about each of these people who have lived at Tocal.



JAMES WEBBER

When was he at Tocal?

.....

.....

What was his job?

.....

.....

.....

What did he do differently to those who came before him?

.....

.....

.....



PERCY REYNOLDS

When were they at Tocal?

.....  
.....

What did they do?

.....  
.....  
.....

What did he do differently to those who came before him?

.....  
.....



CB ALEXANDER

When was he at Tocal?

.....  
.....

What was his job

.....  
.....  
.....

What did he do differently to those who came before him?

.....  
.....



MYRTLE AND  
RITA CURTIS

When were they at Tocal?

.....  
.....

How did they come to be on Tocal?

.....  
.....  
.....

What was the big change that happened on Tocal while they were there?

.....  
.....  
.....



STUDENTS AND  
COLLEGE STAFF

How long have students and teaching staff been at Tocal?

.....  
.....

What do they do there?

.....  
.....  
.....

Review / Notes